



COMPANY PROFILE



WHO WE ARE

Experts offering key solutions for medium to large businesses in need of strategic planning, training & development and management audit. We also provide managers and owners customized investment solutions.

WHY WE EXIST

We are here to help you expand on another level through great planning, key people development, and advanced sales optimization.

OUR MISSION

We guide businesses on how to maintain a positive cash flow throughout their journey of expansion. We create customized solutions that fit every business model; especially when it comes to family businesses.

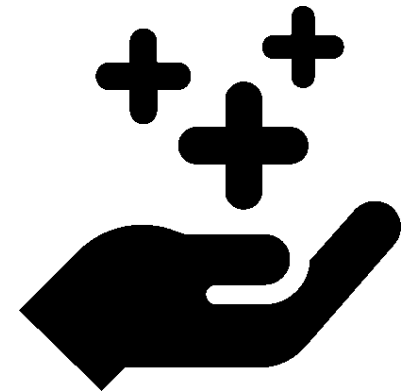


OUR VALUES

- We see problems as opportunities
- We don't sell unnecessary services
- We use inventive ways to boost performance
- We respect deadlines
- We break cycles

OUR ADDED VALUES

- Value-based pricing
- Proven practical approaches
- Flexibility in adjusting to the ever-changing world



HOW WE DO IT

We meet with decision makers, conduct a thorough analysis of the requirements, and present you with resourcefully tailored solutions.

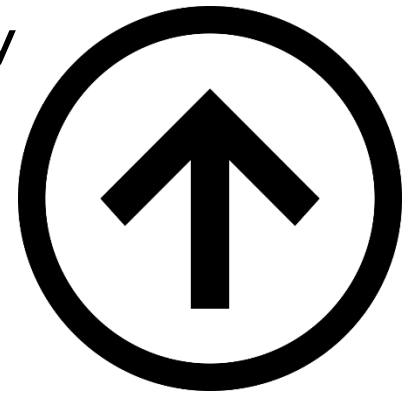


**EXPAND AND DEVELOP
YOUR BUSINESS.**

Top motives to work with us

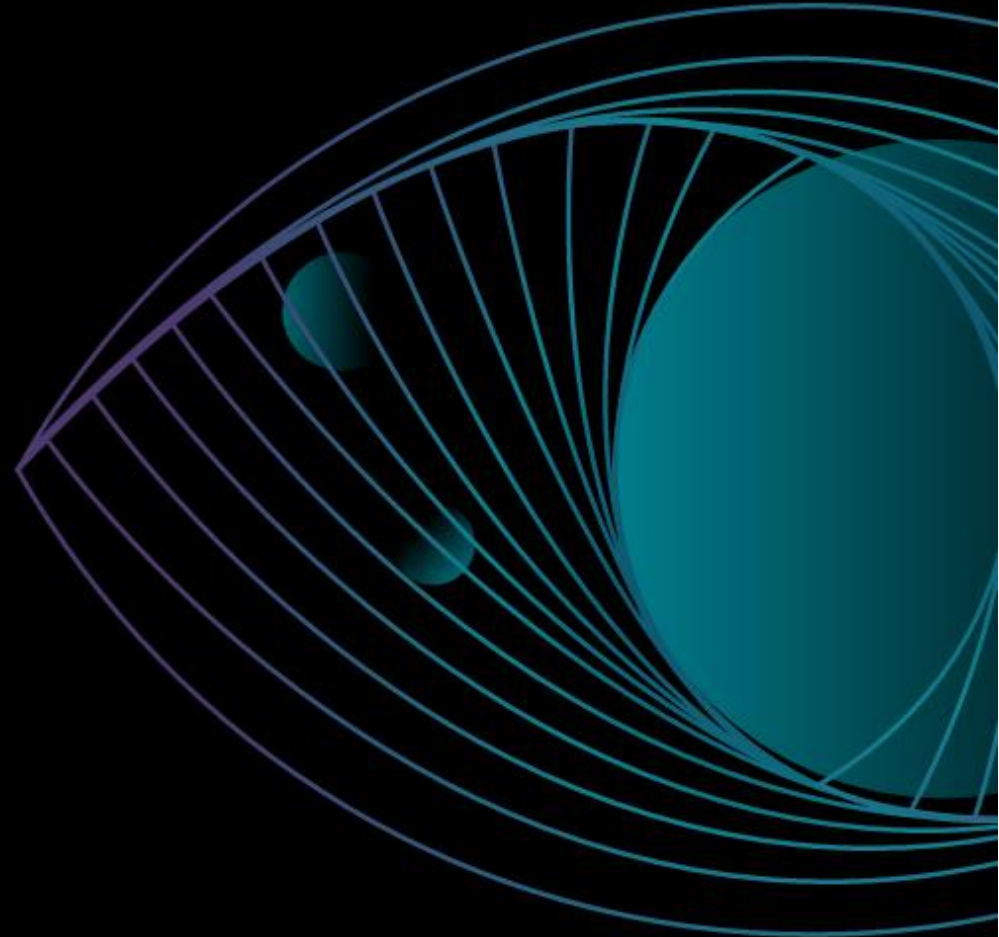


- Starting a new business
- Acquiring investors
- Requesting bank loans or credit facilities
- Restructuring the existing business
- Expanding locally and/or internationally
- Preparing and selling the franchise
- Acquiring an international brand
- Valuing the company
- Planning family succession
- Obtaining mergers and acquisitions
- Adapting the business model
- Introducing new products & services
- Selling and managing from a distance





OUR SERVICES



CUSTOMIZED PRIVATE / COLLECTIVE INVESTMENTS



BUSINESS FRANCHISES



- Spotting the right franchise
- Attracting the right pool of investors
- Business setup
- Management assistance and follow up

POOLS OF PROPERTIES

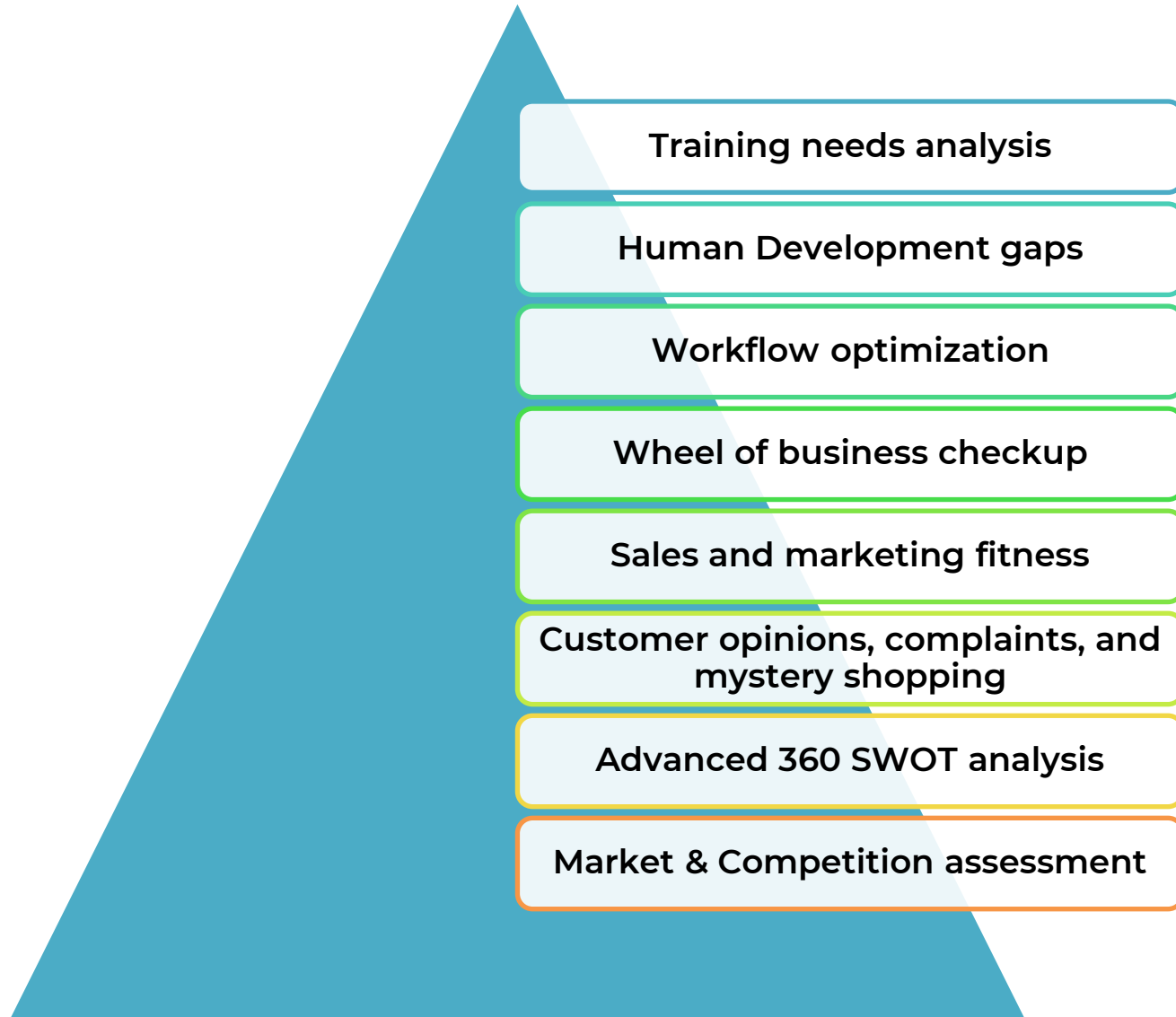


- Find the right properties
- Attract the right pool of investors
- Business setup
- Management and audit on the process

FINANCIAL SERVICES



- Personal financial statements analysis & recommendations
- Lump-sum investments
- Mutual funds & Long term investments with minimum guarantees
- Cash flow back up solutions



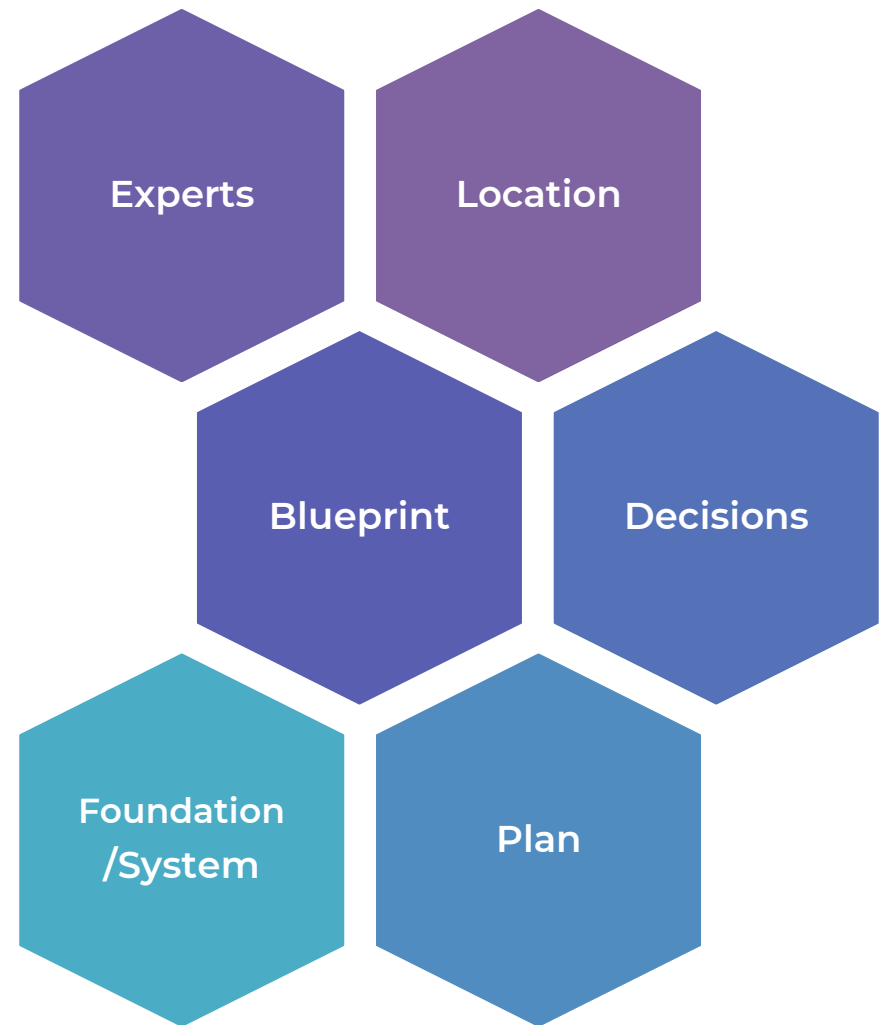
STRATEGIC PLANNING





Whether you travel a lot or you are too busy running the show, our job is to follow up on all the essential functions of the business and make sure productivity is always at its best.

Building a business is similar to building a home in so many ways:



✓
✓
✓



- Assessment prior and post training
- Customized online library material
- Automated tests
- Training of trainers presentations
- Tailor made tools and templates

SALES TEAM DEVELOPMENT





Local, regional, and international expansion of branches

Granting franchise

The introduction of new products and services

The adaptation and integration of new digital technologies

Creating job opportunities thus creating social impact

The expansion of consultative sales teams

The execution of CSR-Corporate Social Responsibility

Preparations for business succession to hand the business on to the next generation

5 goals over 5 years

CEO's Virtual Assistance



Linkedin network expansion

Creating and monitoring surveys

Creating checklists, tools, & templates

Strategic reports/presentations

Sending email newsletters

Writing personalized emails

Online research

Personal budgeting

Recruitment posts & basic filtering





EXPANDED PROJECTS

COMPANIES:



COMPANIES:



COMPANIES:



CLINGGROUP



rana salam STUDIO



Tasché

& Over 100 CEOs in 14 countries in the MENA region

NGOs/CSR:



SAF7A BAYDA
صفحة بيضا

hlis
BEIRUT
LIFE INSURANCE
SEMINARS
/ 2021

World
Wellness
Weekend

جمعية التحريج في لبنان
LEBANON REFORESTATION INITIATIVE

mowgli
mentoring
inspire | connect | evolve

مؤسسة التعاون
WELFARE ASSOCIATION

AMIDEAST
Entrepreneur
Institute
train | support | network

waad

MENP1

مينتور العربية
Mentor Arabia
تمكين الأطفال والشباب
For children and youth empowerment

build YOUR business

Microsoft

international
youth
foundation

CISCO
Entrepreneur
Institute

THE
NAWAYA
NETWORK

citi

Citi Foundation

بنك بيروت
Bank of Beirut
Boot Camp

CIVES MUNDI
ong

MONEYSMART
Financial Literacy Boot Camp

Protecting Communities
RET
Liban

SPEECHES:





CREATE
RIPPLING
SUCCESS

Our Team



JADE W. DAGHER ●

Business Strategist

- Email: jade@expand-mena.com



CERTIFIED MANAGEMENT CONSULTANT



NADINE FARAH ●

Administrative Manager

- Email: team@expand-mena.com



TAMARA EID ●

Senior Consultant

- Email: tamara@expand-mena.com



HABIB M. HOURANI ●

Business Coordinator

- Email: habib@expand-mena.com

Founder



Jade William Dagher is the owner of EXPAND. He is a Certified Management Consultant, CMC © and a member of the CMC-GI-Certified Management Consultants Global Institute.

He has operated in several countries in the MENA region and has had the honor of engaging with various nationalities. He is also a member of the marketing and professional development committees at CMC-GI.

As a fire walker/mentee with Anthony Robbins, he has taken the adventure of improving the standards of entrepreneurship in the region upon himself by bridging the gap between the academic and real world. He has unbounded faith in reducing immigration, fighting unemployment, and enhancing family bonds.

The Certified Management Consultant designation is the preeminent professional designation for management consulting with a variety of sub-specialty areas including knowledge, skills, competence, integrity.

This certificate is not issued by succeeding a course or a test; it must be earned after a complete due-diligence by the CMC-GI board.

This includes a review of the entire candidate portfolio consisting of the clients' case studies, references, documentation, KPIs, and success stories in communication with the clients directly.

A CMC earned in one country can be recognized and trusted should the professional individual work in another jurisdiction in over 54 countries around the world.

OUR EXPERTS



NAJI A. HADDAD

Insurance Sector Expert

- Financial Planner
- MDRT Zone Chair with 20 years of experience in supporting families and businesses to create the adequate protection for their future
- Founder of Legacy Builders
- Life Happens Middle East Ambassador
- GAMA International Ambassador
- Legacy Builders is an insurance and financial consultancy firm that supports the industry by promoting the culture, knowledge, and best practices related to policy & portfolio management, human asset development, and client support.



WAEEL JABER

Fitness Sector Expert

- SPI Master Franchisee
- SPI provides a variety of educational programs to personal trainers, group fitness (aerobics) instructors, coaches, strength training specialists, physical education teachers, and the general population in Canada, the Middle East, and China.



SAMI G. MEKANNA

Construction and Engineering Sector Expert

- Civil Engineer
- Owner of PROMD-GROUP Cyprus
- PROMD-GROUP is a team of passionate experts whose goal is to improve the process of contracting, project management, and business management



RAMY A. TORBEY

Corporate Legal Sector Expert

- Corporate and Tax Attorney
- More than 18 years of experience in international acquisitions and reorganizational structures
- Chairman of Eptalex

CONTACT US



Lebanon:

EXPAND

1st fl. Dagher Bldg. Mar Moussa

Tel: +96170226969

team@expand-mena.com

www.expand-mena.com

Cyprus:

PROMD GROUP LTD

501, Omirou 42, Aglantzia, Nicosia,

Cyprus+357 95568425

management@promd-group.com

www.promd-group.com